

TIN KNOCKER

August 2017

TK EDGE NOTCHER

INSTRUCTIONS & PARTS DIAGRAM



TAAG INDUSTRIES CORP.

1550 SIMPSON WAY, ESCONDIDO, CA 92029

Tel: (800) 640-0746 Fax: (760) 727-9948

Website: www.tinknocker.com Email: info@taagind.com

SAFETY PRECAUTIONS

- 1. Never use a machine or tool for anything other than its intended purpose. Use the proper tool and equipment for the task.**
- 2. Do not operate the machine in excess of its rated capacity.**
- 3. Always turn off machine and remove from power source before making adjustments.**

WARRANTY

All new machines are sold with a one-year limited warranty, on factory defective parts. The warranty is limited to the original user. TAAG Machinery Co. at its option, will repair, replace or refund the purchase price of any part, tool or machine that fails during the warranty period. TAAG Machinery Co. will pay normal shipping charges for replacement parts. After 90 days from date of purchase, all express or overnight delivery charges are the responsibility of the customer. Purchaser must deliver to TAAG Machinery Co., at the address below, any written claim, with proof of original purchase. Replacement parts will be invoiced to purchaser and credit issued when the failed part is delivered to TAAG Machinery Co. Removal, reinstallation or replacement parts shall be at purchasers' / user's expense. Failure due to improper use of the machine voids the warranty.

NOTE:

1. This machine has been tested and adjusted prior to shipment, but can and often does require readjustment due to vibration and bouncing during transport. These are procedures with which you, as a user, should be familiar, as you will use them repeatedly over the life use of the machine.
2. If you have difficulty in performing these procedures, we are here to support you. Call us at: (800) 640-0746.
3. Opening rolls (for Philipsburg Lock) are consumable items and not subject to warranty.

TAAG INDUSTRIES CORP.

“The Tin Knocker People”

1550 Simpson Way

Escondido, CA 92029

Tel: (800) 640-0746 Fax: (760) 727-9948

Website: www.tinknocker.com • Email: info@taagind.com

Adjusting space between notches

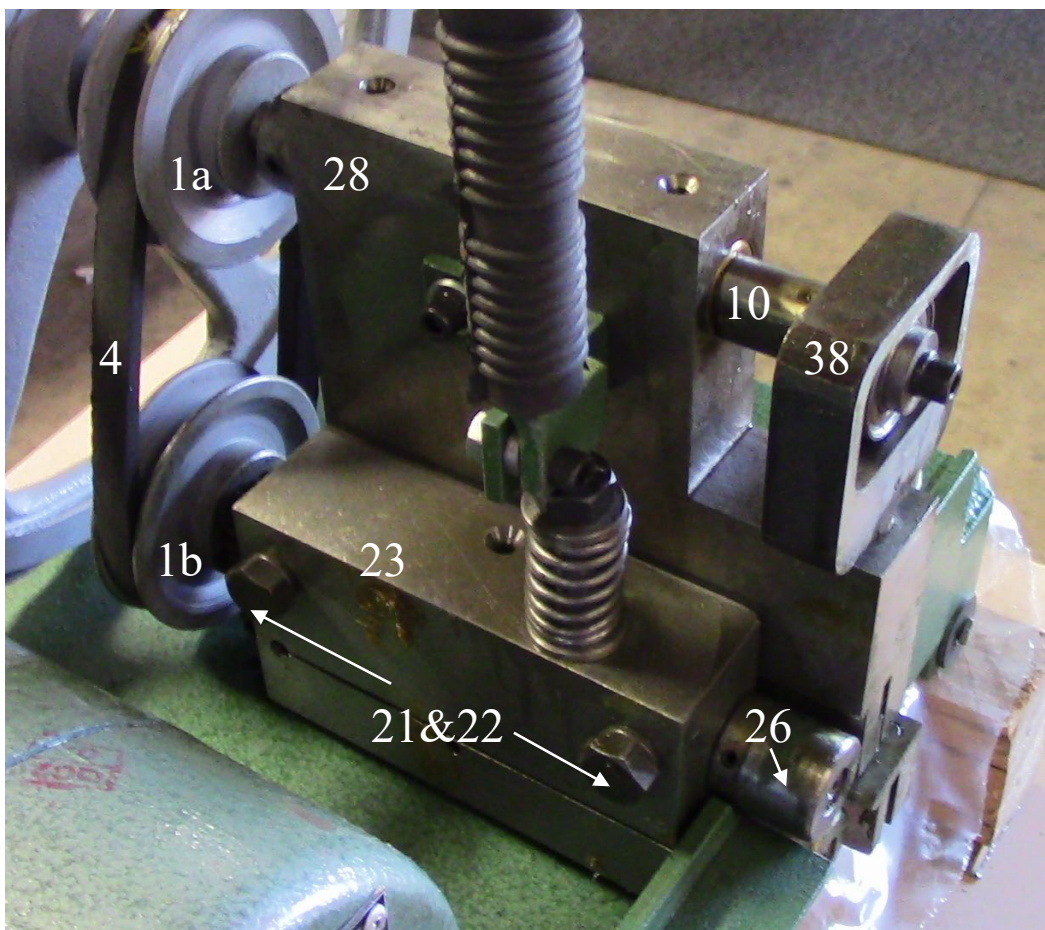
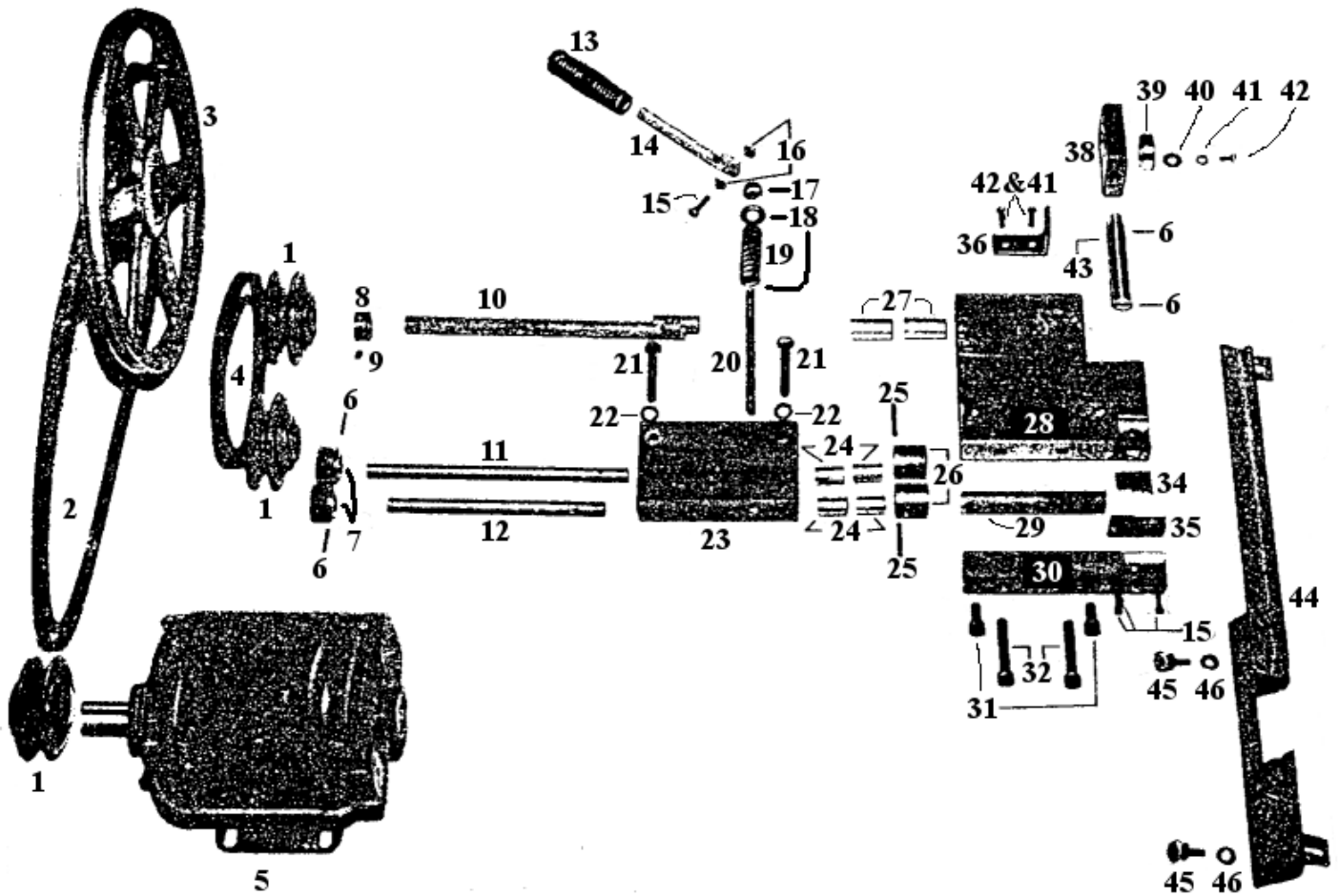
- The adjustable pulleys have variable widths and are comprised of two separate halves. Adjusting must be done by trial and error. There is no exact method for controlling final outcome.
- **More space between notches** → **Decrease topmost pulley width.**
- **Less space between notches** → **Increase topmost pulley width.**
- **The bottom pulley must also be adjusted to maintain belt tension when necessary.**
- To adjust the pulley width:
 - Turn the machine off and remove power source
 - Loosen one or both set screws
 - Tighten or loosen the pulley's halves by rotating the halves with respect to the shaft.
 - Tighten set screws.

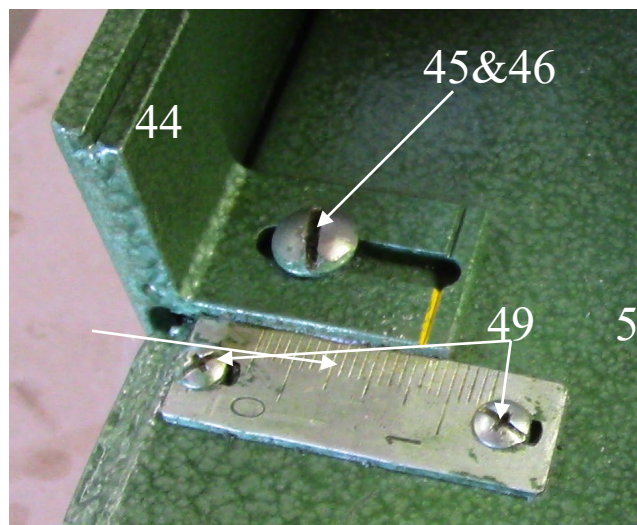
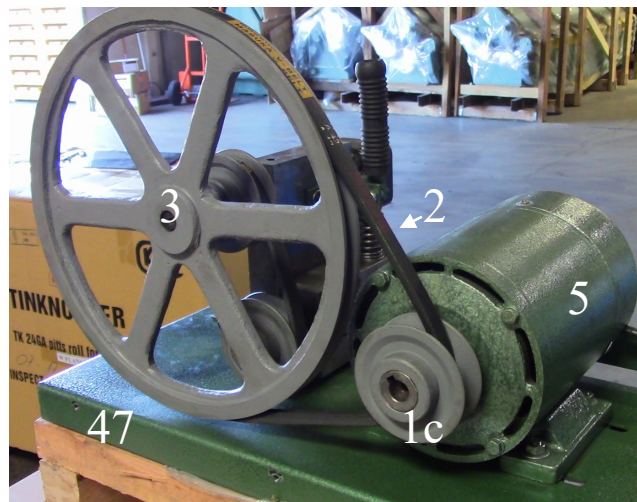
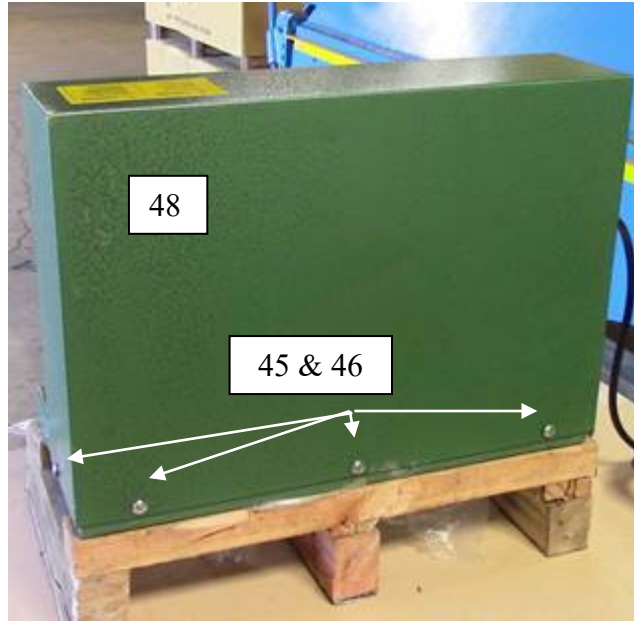
Adjusting Notch Length

- Loosen the Round Head Screws (45) that secure the Gauge Rail (44) to the Base (48). There is one screw on either side.
- Adjust the Gauge Rail (44) with respect to the Rail Adjustment Reference (49).
- Tighten the Round Head Screws (45)

Lubrication

- Grease can be added to lubricate the punch by a grease gun to the capped port underneath the bearing yoke (38).
- Oil may also be added to the counter-sunk holes on top of the Punch Guide Block (28) and the Drive Roll Bearing Block (23).





| Fine No. | Part No. | QTY | Part Name |
|----------|----------|-----|--------------------------------------|
| 1a | EN001 | 1 | Adjustable Pulley 5/8" bore |
| 1b | EN002 | 1 | Adjustable Pulley 1/2" bore |
| 1c | EN003 | 1 | Adjustable Pulley 1/2" bore with key |
| 2 | EN004 | 1 | "V" belt Small |
| 3 | EN005 | 1 | 12" Pulley |
| 4 | EN006 | 1 | "V" belt Large |
| 5 | EN007 | 1 | Electric Motor |
| 6 | EN008 | 4 | Spring Pin Small |
| 7 | EN009 | 2 | Spur Gear |
| 8 | EN010 | 1 | Collar |
| 9 | EN011 | 2 | Collar Set Screw |
| 10 | EN012 | 1 | Eccentric Shaft |
| 11 | EN013 | 1 | Upper Drive Shaft (1/2" x 9") |
| 12 | EN014 | 1 | Lower Drive Shaft (1/2" x 7.5") |
| 13 | EN015 | 1 | Handle Grip |
| 14 | EN016 | 1 | Release Arm |
| 15 | EN017 | 4 | Socket Head Bolt with smooth shank |
| 16 | EN018 | 1 | 7/16" Hex Nut |
| 17 | EN019 | 1 | 17 mm Hex Nut |
| 18 | EN020 | 2 | Spring collar insert (top & bottom) |
| 19 | EN021 | 1 | Spring |
| 20 | EN022 | 1 | Spring Stud |
| 21 | EN023 | 2 | 17mm Hex Head Cap Screw |
| 22 | EN024 | 4 | 3/8" Split Lock Washer |
| 23 | EN025 | 1 | Drive Roll Bearing Block |
| 24 | EN026 | 4 | 1/2" I.D. Bearing |
| 25 | EN027 | 2 | Spring Pin Large |
| 26 | EN028 | 2 | Feed Roller |
| 27 | EN029 | 2 | 5/8" I.D. Bearing |
| 28 | EN030 | 1 | Punch Guide Block |
| 29 | EN031 | 1 | Spacer |
| 30 | EN032 | 1 | Die Support |
| 31 | EN033 | 2 | 17mm Hex Head Cap Screw |
| 32 | EN034 | 2 | Socket Head Screw |
| 34 | EN035 | 1 | Punch |
| 35 | EN036 | 1 | Die Plate |
| 36 | EN037 | 1 | Release Arm Bracket |
| 38 | EN038 | 1 | Bearing Yoke |
| 39 | EN039 | 1 | Cage bearing (Koyo 6202Z) |

| | | | |
|---------------|------------------|--------------|----------------------------------|
| 40 | EN040 | 1 | Washer |
| 41 | EN041 | 3 | Lock Washer |
| 42 | EN042 | 3 | Socket Head Screw |
| 43 | EN043 | 1 | (Part is welded to Bearing yoke) |
| 44 | EN044 | 1 | Gauge Rail |
| 45 | EN045 | 7 | Round Head Screw |
| 46 | EN046 | 7 | 1/4" Tooth Lock Washer |
| 47 | EN047 | 1 | Base |
| 48 | EN048 | 1 | Hood |
| 49 | EN049 | 2 | Rail Adjustment Scale |
| 50 | EN050 | 4 | Round Head Screws |
| Not shown | EN051 | 1 | Power cable sleeve |
| 52 | EN052 | 1 | Power Switch |
| 53 | EN053 | 4 | 1/2" bolt (motor) |
| 54 | EN054 | 4 | 1/2" nut (motor) |
| 55 | EN055 | 4 | Dock washer (motor) |
| 56 | EN056 | 4 | Washer (motor) |
| Not shown | EN057 | 1 | Spacer Plate (not shown) |
| 16 | EN058 | 1 | Thick washer |
| Not shown | EN059 | 2 | Washer (not shown) |
| Not shown | EN060 | 1 | Grease port (not shown) |
| | | | |